

RTK0EMA430C00000BJ

Schematic

- 01 : Contents
- 02 : MCU
- 03 : Inverter Connector
- 04 : I/F Connector
- 05 : JLOB
- 06 : History

Supplementary explanation :

DNF: unmounted part

Access point : <horizontal, vertical, page>

Ex.

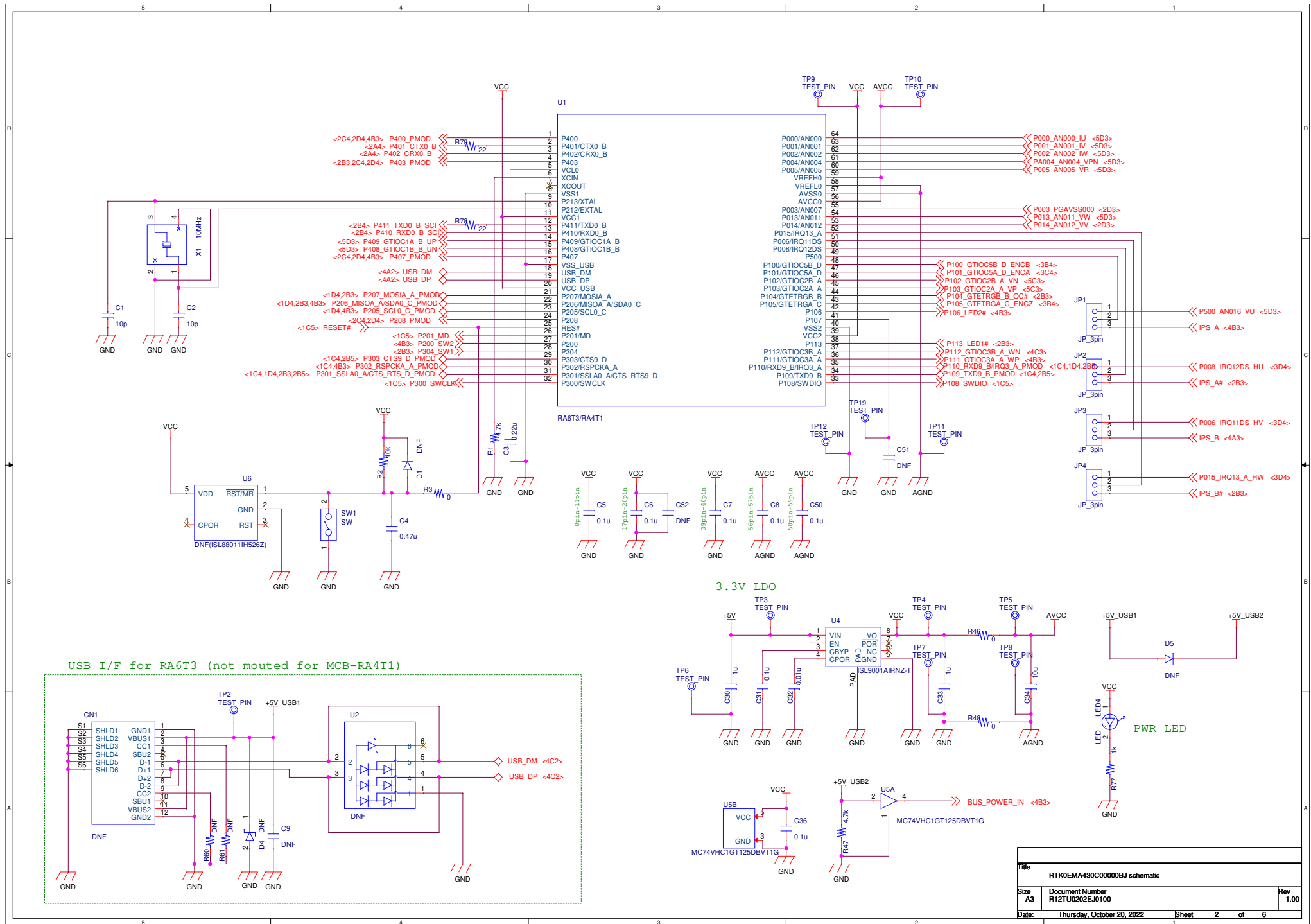
< 4 C 3 >

page

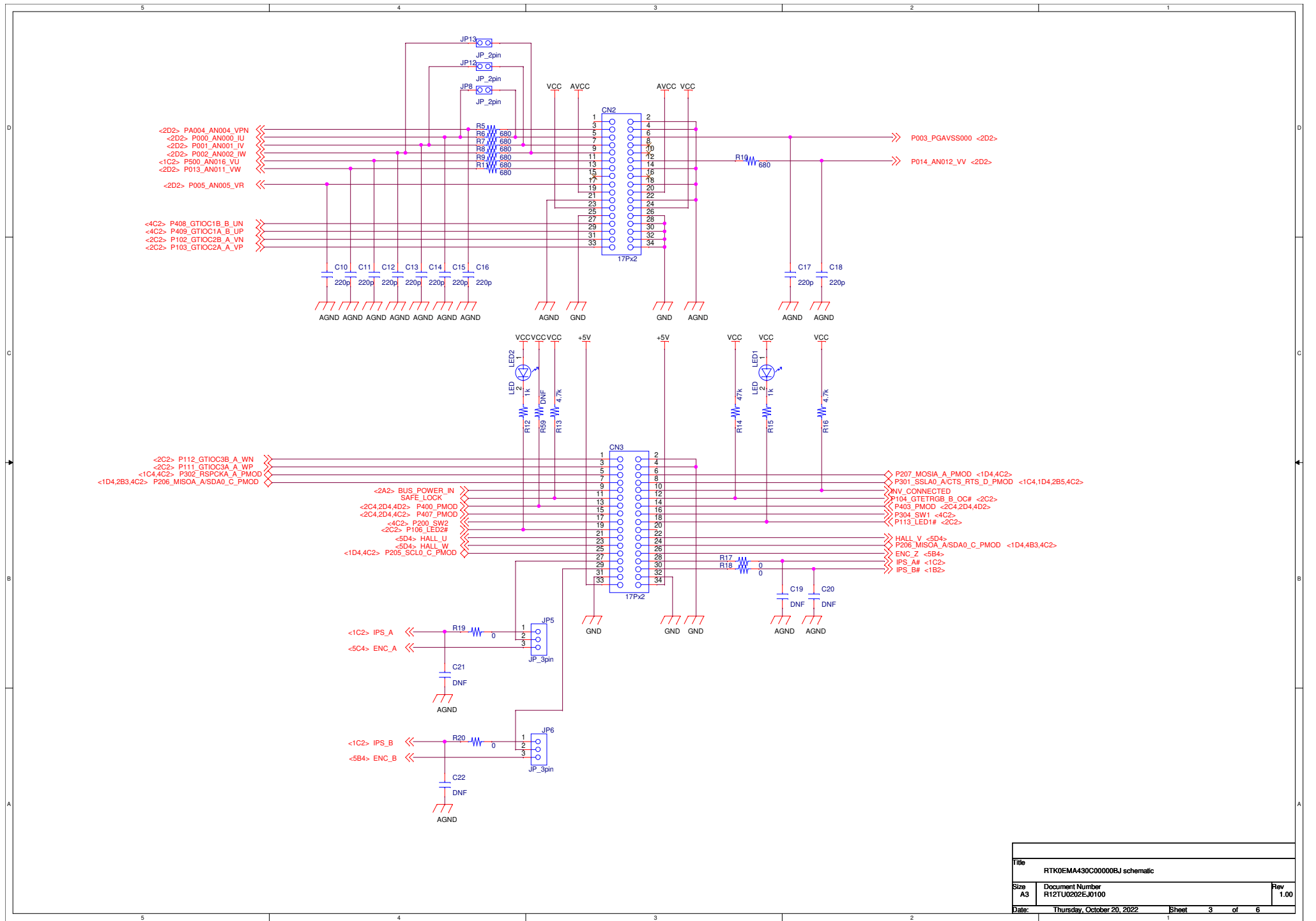
vertical

horizontal

Title		
RTK0EMA430C00000BJ schematic		
Size	Document Number	Rev
A3	R12TU0202EJ0100	1.00
Date:	Thursday, October 20, 2022	Sheet 1 of 6

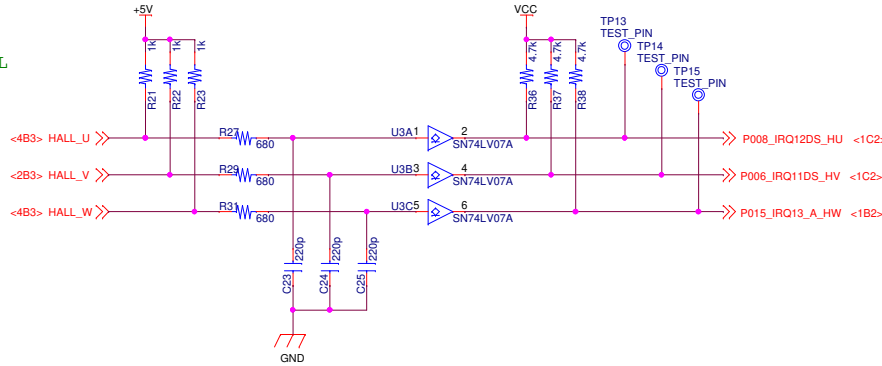


Title			RTK0EMA430C00000BJ schematic
Size	Document Number	Rev	
A3	R12TU0202EJ0100	1.00	
Date:	Thursday, October 20, 2022	Sheet	2 of 6

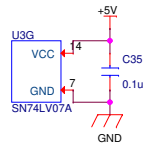
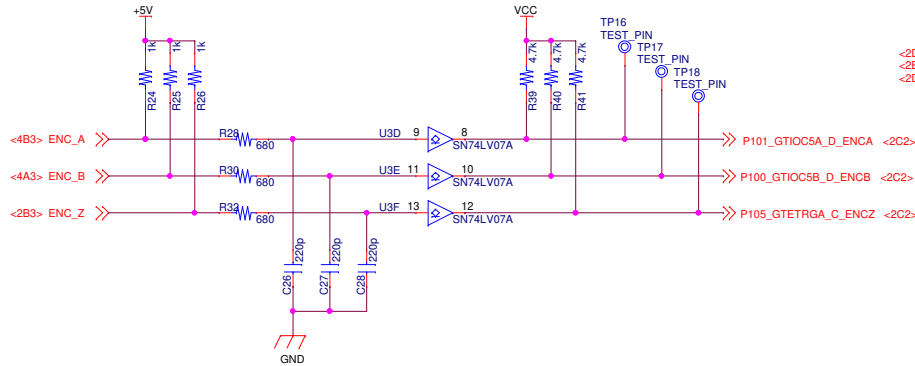


Title			RTK0EMA430C00000BJ schematic
Size	Document Number	Rev	
A3	R12TU0202EJ0100	1.00	
Date:	Thursday, October 20, 2022	Sheet	3 of 6

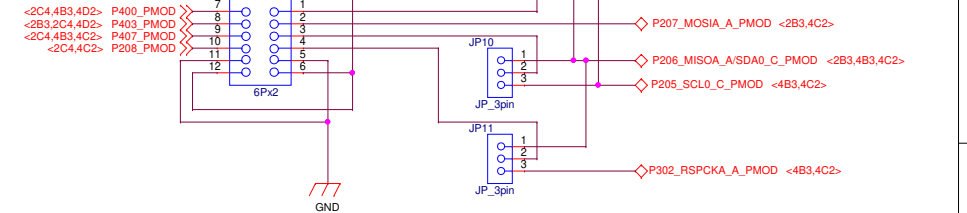
HALL



ENC



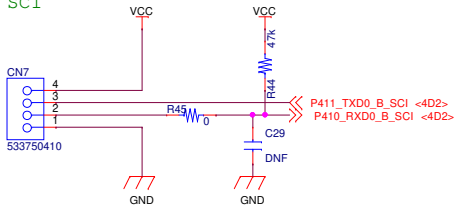
PMOD
Type 2A/6A



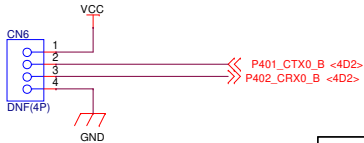
PMOD
Type 3A



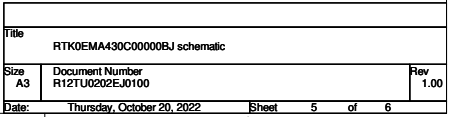
SCI



CAN



Title			RTK0EMA430C0000BJ schematic		
Size	A3	Document Number	R12TU0202EJ0100	Rev	1.00
Date:	Thursday, October 20, 2022		Sheet	4	of 6



5

4

3

2

1

History

Rev.	Date	Page	Summary
1.00	2022/10/20	—	First edition

D

C

B

A

5

4

3

2

1

Title

RTK0EMA430C00000BJ schematic

Size

A3

Document Number

R12TU0202EJ0100

Rev

1.00

Date:

Thursday, October 20, 2022

Sheet

6

of

6